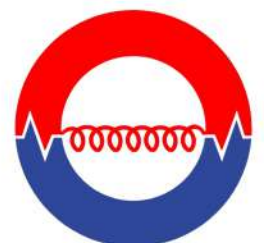


Precision Storage Vessels



FABRICATED SIMPLEX & DUPLEX BASKET STRAINERS



PRECISION

PRECISION

Fabricated Simplex / Duplex Basket Strainer

Fabricated simplex & Duplex basket strainer are generally made of steel. These strainers can be made in materials like carbon steel or stainless steel based on project requirements. Basket strainers has a flat top. Basket strainer design maintains low pressure drops. Fabricated simplex strainers weighs less compared to cast iron strainers. Major advantages of basket strainers are without dismantling the pipeline connections, strainer basket can be remove by unbolting the top flange bolts. Optionally an on/off back flush valve can be installed at the bottom of strainer which can be opened when huge amount of debris gets settled at the bottom of strainer.

Fabricated duplex strainers are used when standard products cannot meet the requirements. Higher flow rates can be achieved.

They are used in application where fluid flow cannot be interrupted when the basket needs to be removed for cleaning or for maintenance purpose. Duplex type basket strainers are designed in such a way to allow changeover from one strainer to the other. The changeover from is done by isolating the particular strainer. All duplex strainer models used EPDM seat Butterfly valves.

Standard Equipment

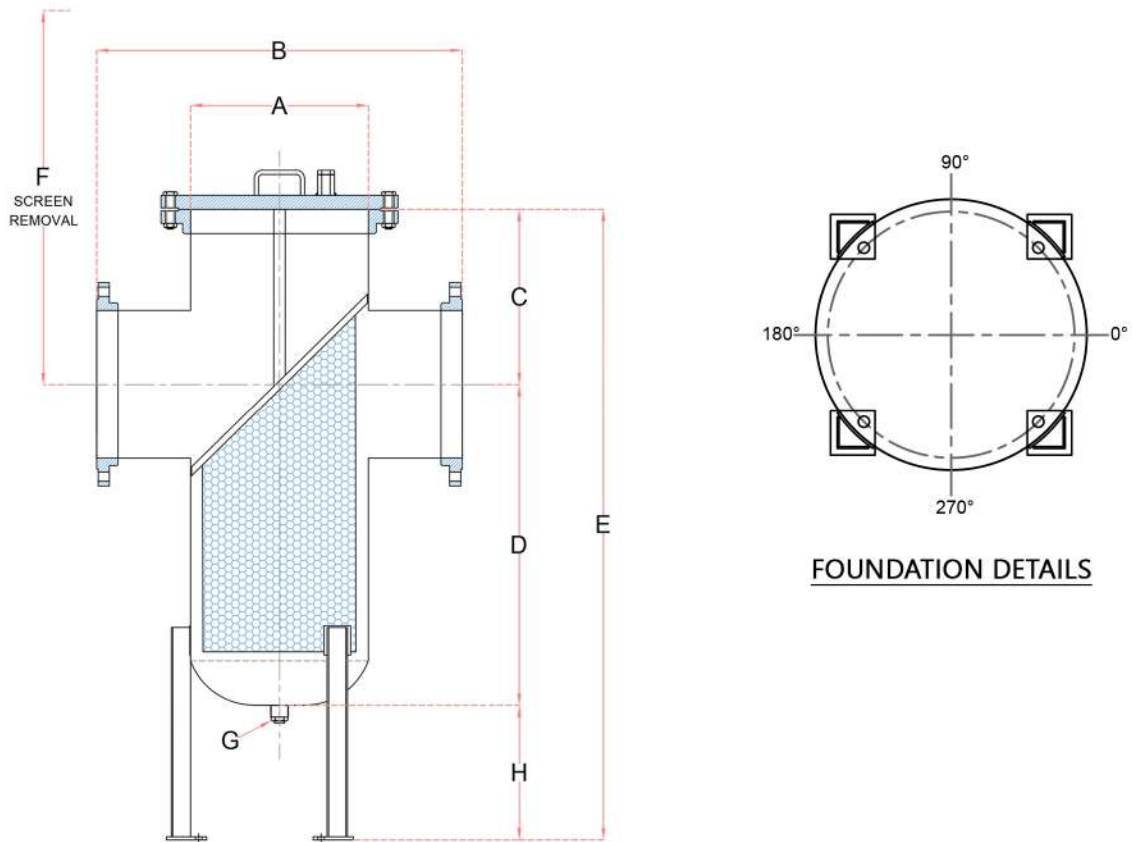
- Material A36
- Fabricated basket strainer are manufactured as per ASME standard
- Welders certified to ASME Section IX
- Channel support with 4 legs
- Flanged to PN16 Class 150, Class 300
- Working pressure up to 30 bar
- Connection size 2" to 48"
- Flanged or butt weld
- Screen material stainless steel
- Body flange forged steel A105
- Inlet/outlet connection flange forged steel A105
- Bolts G.I
- Nuts G.I
- Vent and drain connection standard
- Bigger sizes with Davit assembly

Application

- Water & other liquid system protection of pumps meters valves and other equipment
- Chemical industries
- Process industries
- Power industries
- Oil & Gas
- Metals & Mining



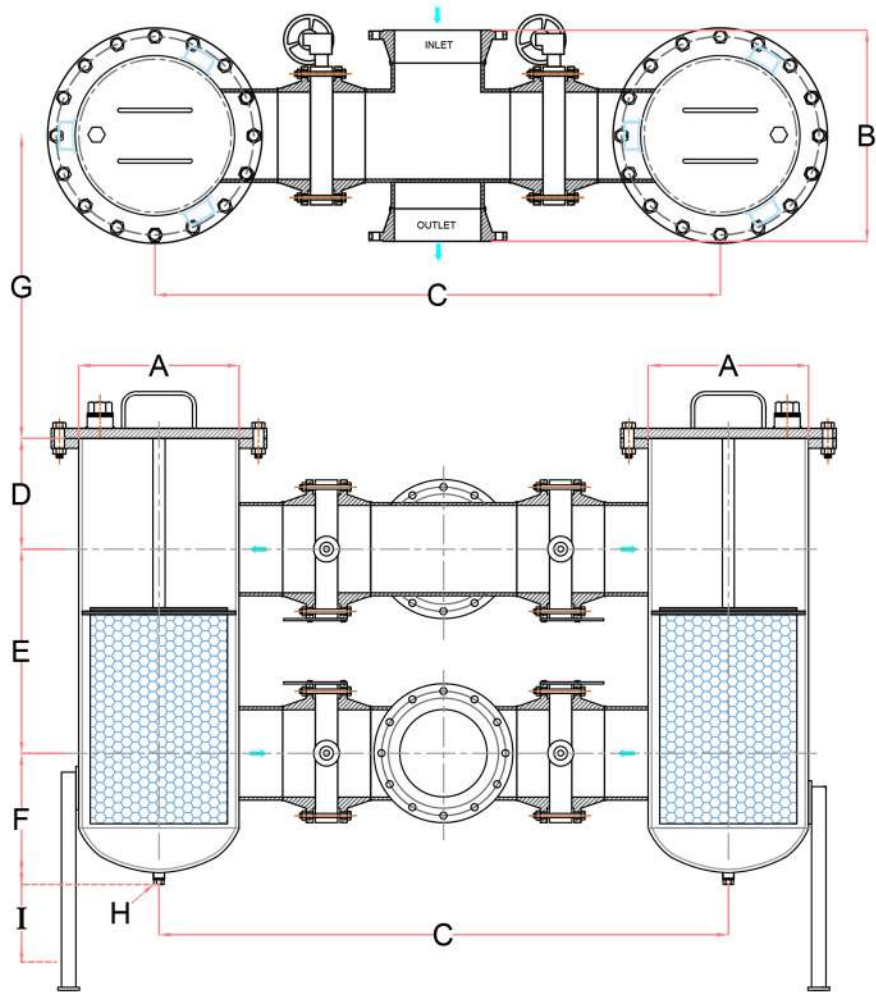
SIMPLEX BASKET STRAINER :-



DIMENSIONS :-

In/Out Inch	A mm	B mm	C mm	D mm	E mm	F mm	G mm	H mm
2"	168	460	205	258	463	470	19	-
2 ½"	168	460	205	258	463	470	19	-
3"	219	519	260	317	577	580	19	-
4"	324	624	290	412	702	710	25	-
5"	324	624	290	412	952	710	25	250
6"	406	716	305	547	1102	860	25	250
8"	457	767	400	715	1365	1125	38	250
10"	508	820	460	917	1677	1380	38	300
12"	508	858	510	867	1677	1400	38	300
14"	610	1025	550	903	1803	1475	50	350
16"	667	1127	550	1127	2027	1700	50	350
18"	667	1127	550	1117	2017	1700	50	350
20"	717	1268	600	1100	2100	1700	50	400
24"	813	1663	800	1404	2604	2225	50	400
30"	914	1764	850	1604	2854	2500	50	400
36"	1275	2125	850	1970	3320	3000	50	500
48"	1683	2483	1000	3420	4920	4500	50	500

DUPLEX BASKET STRAINER



DIMENSIONS :-

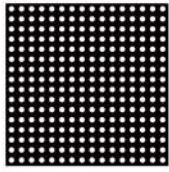
In/Out Inch	A mm	B mm	C mm	D mm	E mm	F mm	G mm	H mm	I mm
2"	168	260	815	170	330	170	610	19	-
3"	219	320	880	185	330	170	635	19	-
4"	324	370	1100	225	430	210	815	25	-
6"	406	470	1260	255	435	260	865	25	250
8"	457	565	1415	285	535	315	1015	38	250
10"	508	640	1585	340	635	365	1190	38	300
12"	508	745	1860	385	710	415	1345	38	300
14"	610	820	1985	400	765	455	1420	51	350
16"	667	870	2160	460	865	520	1625	51	350
18"	667	970	2300	460	915	550	1700	51	350
20"	717	1060	2590	590	1015	575	1955	51	400
24"	813	1175	2895	685	1220	625	2310	51	400

Note: other capacities are also available please consult factory.

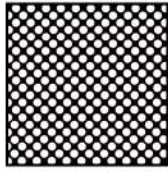
PERFORATED SHEET METAL SIZES



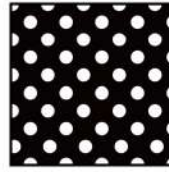
0.033 DIA
1/32" Approximately
331 Holes Per Sq. In.
29% Open Area



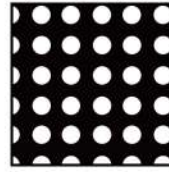
0.045 DIA
3/64" Approximately
225 Holes Per Sq. In.
33% Open Area



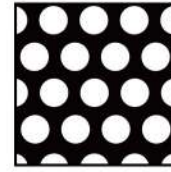
0.062 DIA
1/16" Approximately
98 Holes Per Sq. In.
30% Open Area



0.094 DIA
3/32" Approximately
51 Holes Per Sq. In.
36% Open Area



0.125 DIA
1/8" Approximately
29 Holes Per Sq. In.
43% Open Area

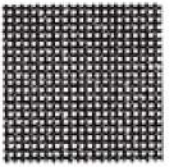


0.1875 DIA
3/16" Approximately
18 Holes Per Sq. In.
51% Open Area

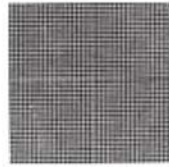


0.25 DIA
1/4" Approximately
12 Holes Per Sq. In.
58% Open Area

MESH SIZES



20 MESH
Wire Dia. 0.015
Opening 0.034
49% Open Area



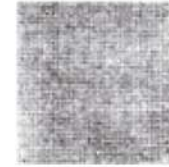
40 MESH
Wire Dia. 0.009
Opening 0.016
41% Open Area



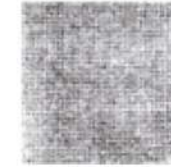
60 MESH
Wire Dia. 0.0065
Opening 0.010
38% Open Area



80 MESH
Wire Dia. 0.0055
Opening 0.0070
31% Open Area



100 MESH
Wire Dia. 0.0045
Opening 0.0055
30% Open Area



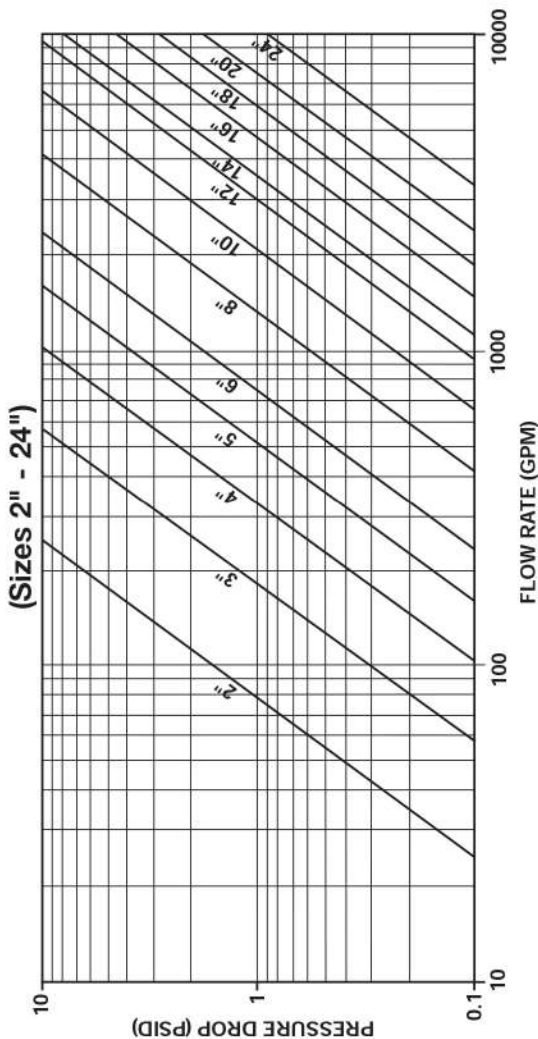
200 MESH
Wire Dia. 0.0021
Opening 0.0029
34% Open Area



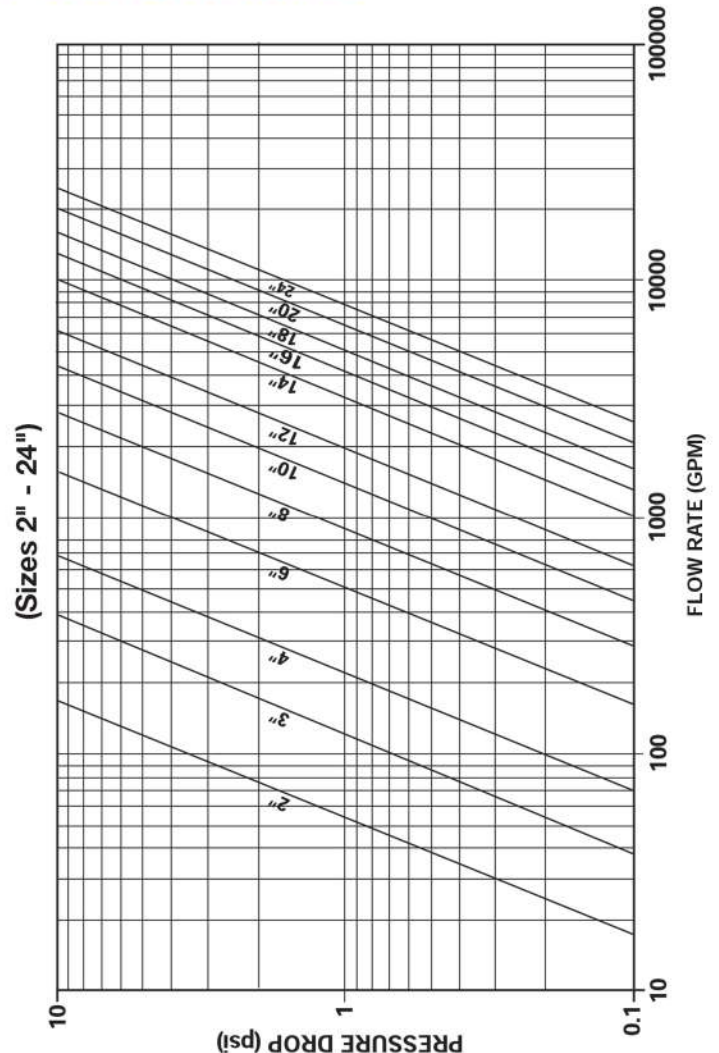
***300 MESH**
Wire Dia. 0.0012
Opening 0.002
41% Open Area

- Stainless steel screens are standard in all strainers

PRESSURE DROP VS FLOW RATE



FABRICATED SIMPLEX STRAINERS



FABRICATED DUPLEX STRAINERS

RANGE OF PRODUCTS

- ❖ PLATE HEAT EXCHANGERS
- ❖ AIR RECEIVERS
- ❖ PLATE HEAT EXCHANGERS
- ❖ SUCTION DIFFUSERS
- ❖ AIR & DIRT SEPARATORS
- ❖ ELECTRIC WATER HEATERS
- ❖ AIR SEPARATORS
- ❖ COMPRESSED TYPE EXPANSION VESSELS
- ❖ BLOWDOWN VESSELS
- ❖ CHILLED WATER BUFFER TANKS
- ❖ SURGE VESSELS (AIR IN BLADDER TYPE)
- ❖ SURGE VESSELS (WATER IN BLADDER TYPE)



PRECISION

Precision Storage Vessels Pvt. Ltd.

Kalpadi, P.O. Kalpadi, K. K. Dist.

Tamil Nadu, India

Tel : 0091 4651 237730

email: manuel@psvpl.com



PRECISION

Precision Storage Tanks LLP

3rd Floor 82 King Street

Manchester MZYWQ

United Kingdom